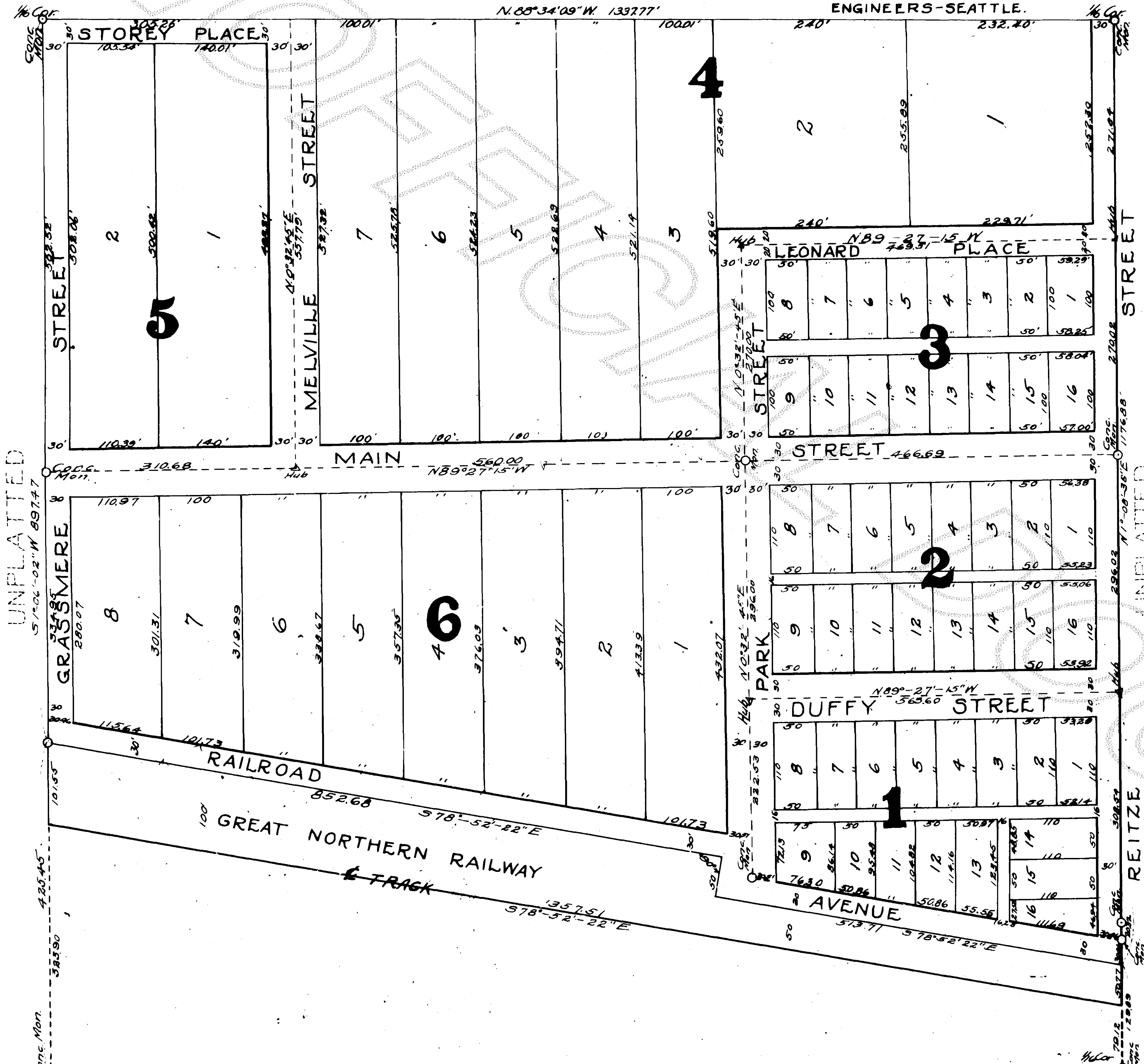


# EVERETT'S SECOND ADDITION TO CONCRETE, SKAGIT COUNTY, WASH.

SCALE 1"=100'

UNPLATTED

REITZE STOREY & DUFFY-INC.  
ENGINEERS-SEATTLE.



## DESCRIPTION

This plat of Everett's Second Addition to the Town of Concrete embraces all of that portion of the SW 1/4 of the NW 1/4 of Sec. 10, Twp. 35 N., R. 8 E., W. M. lying North of the Right of Way of the Great Northern Railway, more particularly described as follows:-

Beginning at the 1/4 corner of Sections 9 and 10 thence N. 1°-06'-02" E. along the Sec. Line between Sections 9 and 10, 425.45 feet to the point of beginning which is a concrete monument on the Great Northern Railway's Right of Way; thence S. 78°-52'-22" E. along the G.N.R.R. R. of W. a distance of 852.68 feet; thence S. 11°-07'-38" W. along G.N.R.R. R. of W. a distance of 50 feet; thence S. 78°-52'-22" E. along G.N.R.R. R. of W. a distance of 513.71 feet; thence N. 1°-08'-38" E. a distance of 1176.88 feet to a concrete monument set for a 1/4 corner; thence N. 88°-34'-09" W. a distance of 1337.77 feet to a concrete monument set for a 1/4 corner; thence S. 1°-06'-02" W. a distance of 897.47 feet to the point of beginning.

The sizes of lots, streets, and alleys are as shown on the annexed plat in feet and decimals.

## DEDICATION

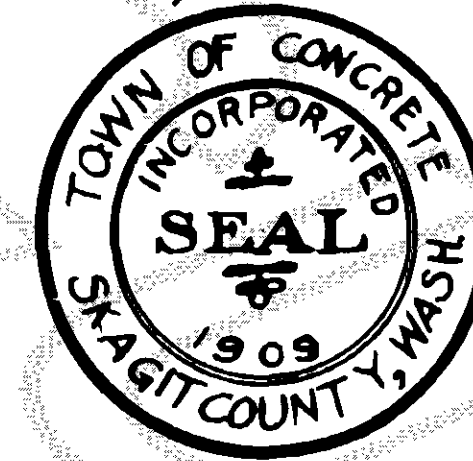
Know all men by these presents: that we, Amasa Everett and Mary Everett, his wife, owners in fee simple of the above described tract of land, do hereby declare this plat and dedicate to the uses of the public forever the streets platted thereon.

Witness our hands and seals this 29th day of October AD. 1913  
 Witnessed by *Geo Kumpf* Amasa Everett  
 Edna C. Peterson Mary Everett

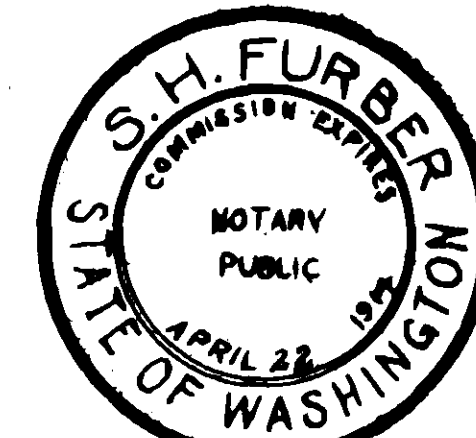
## ACKNOWLEDGMENT

State of Washington } ss  
 County of King }  
 This is to certify that on this 29th day of October, AD. 1913, before me the undersigned a Notary Public in and for the State of Washington duly qualified, commissioned and sworn, personally appeared Amasa Everett and Mary Everett, his wife, to me known to be the individuals described and who executed the within instrument, and they acknowledged to me that they signed and sealed the same as their free and voluntary act and deed for the uses and purposes therein mentioned.  
 In witness whereof, I have hereunto set my hand and official seal this 29th day of October, AD. 1913.

*J. H. Furber*  
 Notary Public in and for the State of Washington, residing at Seattle



Approved by resolution of  
 Town Council of Town of Concrete  
 Nov. 4, 1913.  
*M. E. Startley* Mayor  
*J. M. Phebus* Clerk



Examined and approved this 4th day of November, 1913.  
*Floyd H. Rolten*  
 Town Engineer - Town of Concrete

Examined and approved this 3rd day of November, 1913.  
*G. J. Strong* County Engineer

Approved by resolution of the Board of County Commissioners.  
*Alfred Polson*  
 Chairman of the Board of County Commissioners.

Attest *M. J. Alexander* County Auditor and ex-officio Clerk  
 of the Board of County Commissioners.

Filed for record at the request of \_\_\_\_\_ this \_\_\_\_\_ day of \_\_\_\_\_ A.D. 1913 at \_\_\_\_\_ minutes past \_\_\_\_\_ o'clock \_\_\_\_\_ M. and recorded in volume \_\_\_\_\_ of Plats, page \_\_\_\_\_ of records of Skagit County.

County Auditor  
 Deputy



UNPLATTED  
 I hereby certify that the 1913 Taxes on this tract have been paid as provided by law. My general receipt #4943. Nov 3 1913  
*Chas. B. ...*  
 Co. Treas.

Filed for record at request of L.E. Wolfe on the 10 day of Nov. AD. 1913 at 5 minutes past 9 o'clock am. and recorded in Volume 4 of Plats at page 13 Records of Skagit County, Washington.  
*M. J. Alexander*  
 Auditor Skagit County, Washington.