

692237

692237

4810

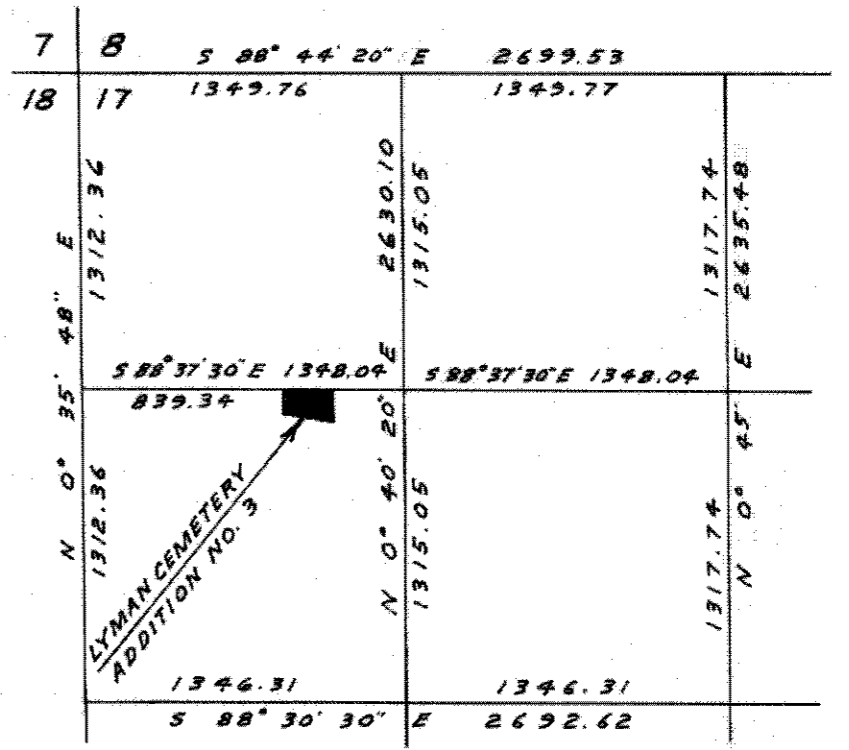
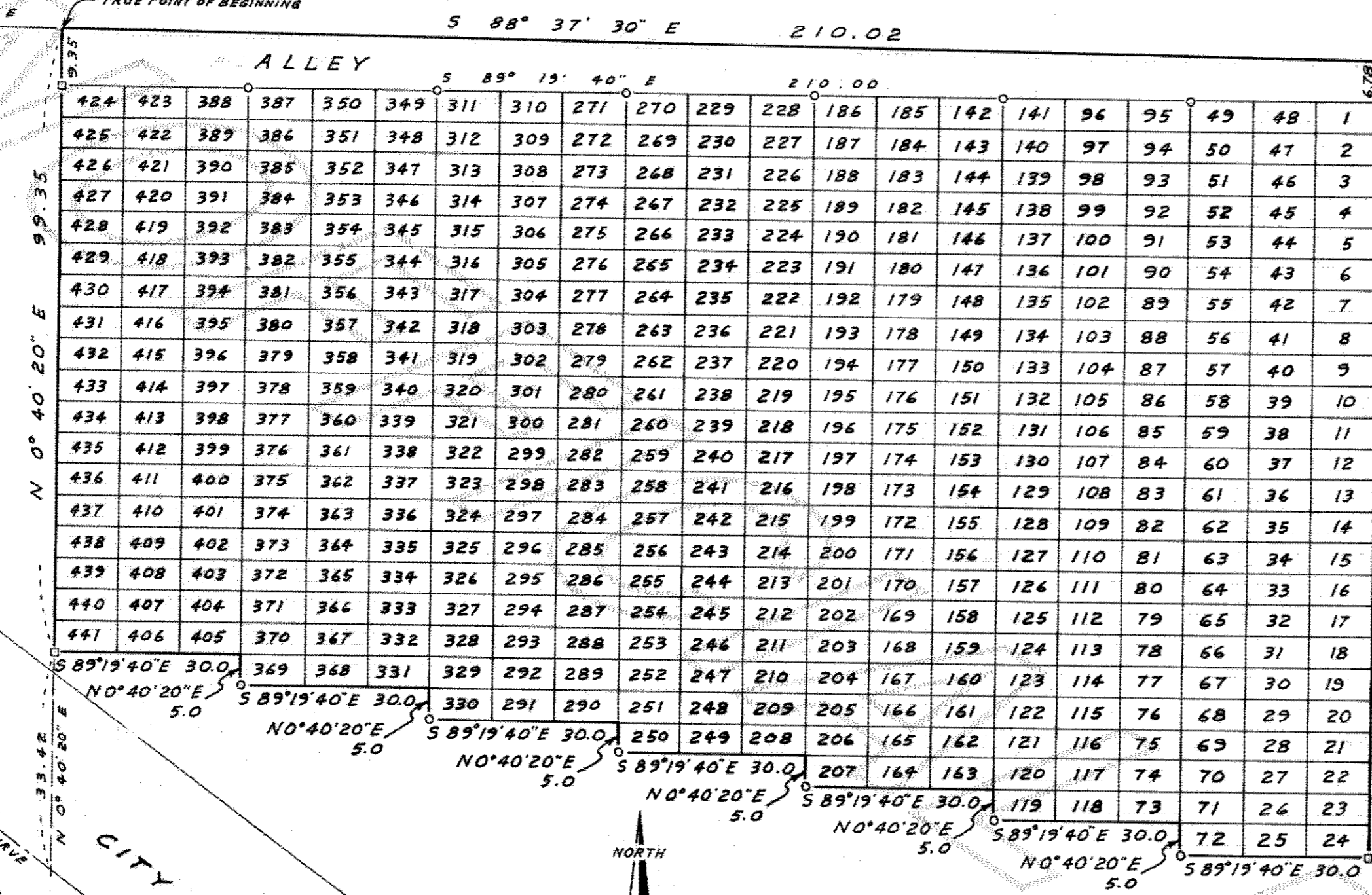
NOTE: ALL LOTS IN THIS PLAT ARE 5.0' X 10.0'

66 DEC 16 AM 10:42
RECORDED FILED
REQUEST OF

PLAT OF LYMAN CEMETERY ADDITION NO. 3

N.W. CORNER OF THE S.W. 1/4 OF THE N.W. 1/4 OF SECT. 17, T. 35 N., R. 6 E.W.M. (BRASS PLUG IN CONC. PAVEMENT)

CONCRETE SURVEY MONUMENT
IRON PIPE



STREET DESCRIPTION

The PLAT of LYMAN CEMETERY Addition No. 3 EMBRACES THE FOLLOWING DESCRIBED TRACT OF LAND IN THE S.W. 1/4 OF THE N.W. 1/4 OF SECTION 17, TWP. 35 N., RANGE 6 EAST OF THE WILLAMETTE MERIDIAN; BEGINNING AT THE N.W. CORNER OF SAID SUBDIVISION; THENCE S88°37'30"E ALONG THE NORTH LINE OF SAID SUBDIVISION 839.34 FEET TO THE TRUE POINT OF BEGINNING; THENCE S0°40'20"W 99.35 FEET; THENCE S89°19'40"E 30.0 FEET; THENCE S0°40'20"W 5.0 FEET; THENCE S89°19'40"E 30.0 FEET; THENCE S0°40'20"W 5.0 FEET; THENCE S89°19'40"E 30.0 FEET; THENCE S0°40'20"W 5.0 FEET; THENCE S89°19'40"E 30.0 FEET; THENCE S0°40'20"W 5.0 FEET; THENCE S89°19'40"E 30.0 FEET; THENCE S0°40'20"W 5.0 FEET; THENCE S89°19'40"E 30.0 FEET; THENCE S0°40'20"W 5.0 FEET; THENCE S89°19'40"E 30.0 FEET; TO THE SOUTH EAST CORNER OF THIS PLAT, SAID POINT BEING ON THE WEST LINE OF THE "K. OF P." CEMETERY OF LYMAN, WASHINGTON, RECORDED IN VOLUME 5 OF PLATS, PAGE 17, RECORDS OF SKAGIT COUNTY WASHINGTON; THENCE N0°40'20"E ALONG THE WEST LINE OF SAID "K. OF P." CEMETERY 120.0 FEET TO A POINT WHICH BEARS N89°19'40"W A DISTANCE OF 13.0 FEET FROM THE N.W. CORNER OF LOT 6, BLOCK 5 OF SAID "K. OF P." CEMETERY; THENCE CONTINUE N0°40'20"E 6.78 FEET TO THE NORTH LINE OF THE S.W. 1/4 OF THE N.W. 1/4 OF SECTION 17; THENCE N88°37'30"W 210.02 FEET TO THE TRUE POINT OF BEGINNING.

SCALE: 1" = 20'

TREASURERS CERTIFICATE

THIS IS TO CERTIFY THAT ALL TAXES HERETOFORE LEVIED AND WHICH HAVE BECOME A LIEN UPON THE LANDS HEREIN DESCRIBED, HAVE BEEN FULLY PAID AND DISCHARGED, ACCORDING TO THE RECORDS OF MY OFFICE, UP TO AND INCLUDING THE YEAR OF 1967.

Edward Dawson
Treasurer, Skagit County, Washington

AUDITORS RECORD

FILED FOR RECORD AT THE REQUEST OF H. RADER ON THIS 16 DAY OF December A.D. 1966 AT 42 MINUTES PAST 12:00 O'CLOCK A.M., AND RECORDED IN VOLUME 9 OF PLATS AT PAGE 33, RECORDS OF SKAGIT COUNTY, WASHINGTON.

John
Auditor of Skagit County

DEDICATION

KNOW ALL MEN BY THESE PRESENTS THAT THE CITY OF LYMAN, OWNERS IN FEE SIMPLE OF THE LANDS HEREIN DESCRIBED, DO HEREBY DECLARE THIS PLAT TO BE KNOWN AS LYMAN CEMETERY ADDITION NO. 3 AND DO HEREBY DEDICATE TO THE USE OF THE PUBLIC FOREVER, ALL STREETS, ALLEYS, PATHS AND PUBLIC WAYS AS SHOWN HEREBON. IN WITNESS WHEREOF THE MAYOR AND THE CLERK OF THE CITY OF LYMAN HAVE SET THEIR HANDS AND AFFIXED THE OFFICIAL SEAL OF THE CITY OF LYMAN THIS 13 DAY OF December 1966.

Nate Beasley
Mayor
Eileen B. Coggins
Clerk

ACKNOWLEDGMENT

STATE OF WASHINGTON } ss
COUNTY OF SKAGIT }
THIS IS TO CERTIFY THAT ON THIS 13 DAY OF December 1966 BEFORE ME A NOTARY PUBLIC IN AND FOR THE STATE OF WASHINGTON, PERSONALLY APPEARED NATE BEASLEY AND EILEEN COGGINS, TO ME KNOWN TO BE THE MAYOR AND THE CLERK, RESPECTIVELY, OF THE CITY OF LYMAN, WHO STATED THEY WERE AUTHORIZED TO EXECUTE THE FOREGOING DEDICATION, AND WHO ACKNOWLEDGED THAT THEY SIGNED THE SAME AS THE FREE AND VOLUNTARY ACT AND DEED OF THE CITY OF LYMAN FOR THE USES AND PURPOSES THEREIN MENTIONED.

Jacob Koop
Notary Public in and for the State of Washington
Residing at Lyman

SURVEYORS CERTIFICATE

I HEREBY CERTIFY THAT THIS PLAT OF LYMAN CEMETERY ADDITION NO. 3 IS BASED UPON AN ACTUAL SURVEY AND SUBDIVISION OF THE S.W. 1/4 OF THE N.W. 1/4 OF SECTION 17, T. 35 N., R. 6 E.W.M., THAT THE DISTANCES, COURSES AND ANGLES ARE SHOWN HEREDON CORRECTLY; THAT MONUMENTS HAVE BEEN SET AND LOTS STAKED AS SHOWN; THAT THE PROVISIONS OF STATUTE AND ORDINANCE HAVE BEEN OBSERVED.

Harold R. Rader
HAROLD R. RADER
Registered Professional Engineer
& Land Surveyor

